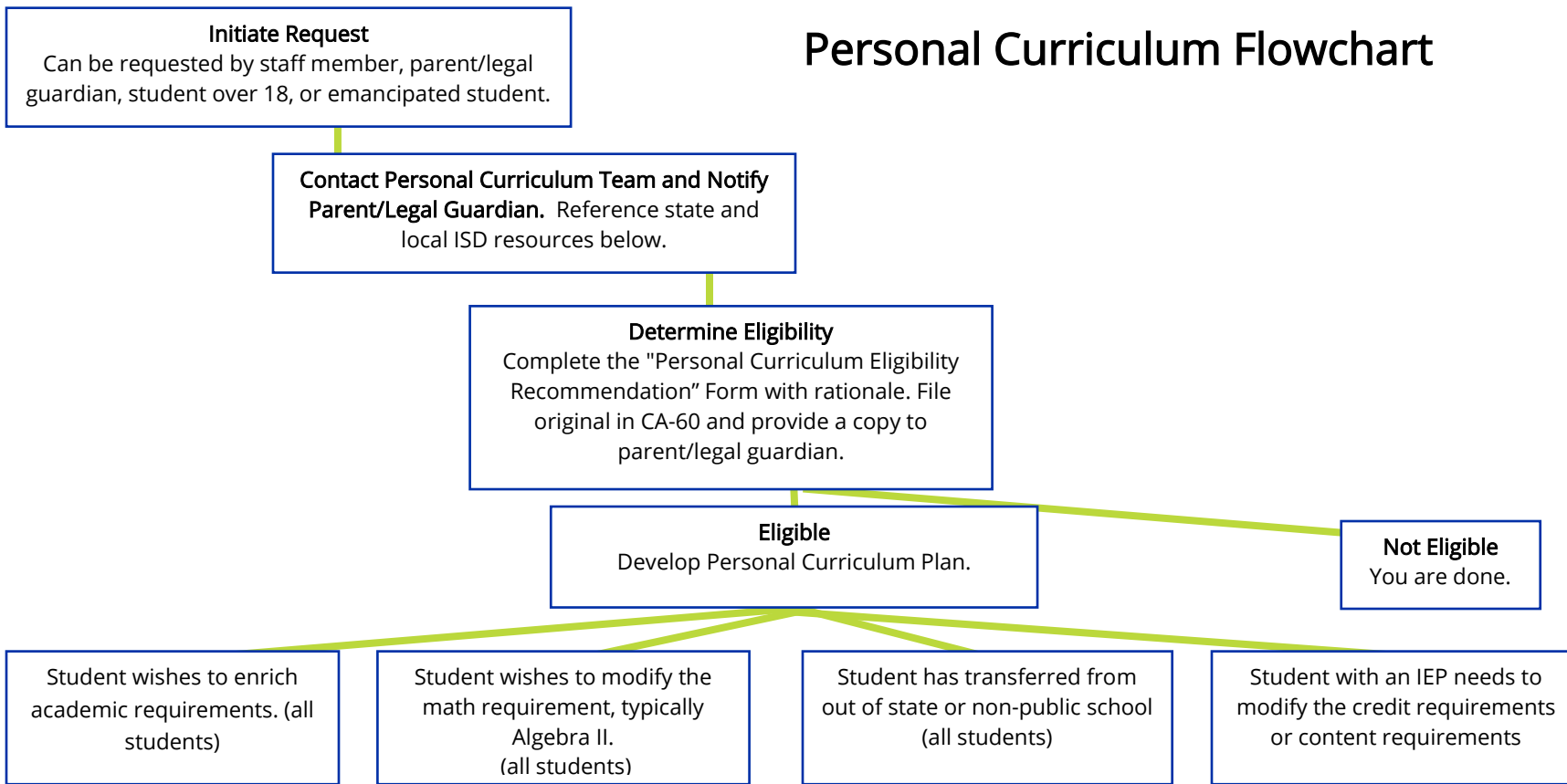


Personal Curriculum Flowchart



Superintendent or designee **approves the plan.** Copy of plan is provided to parent/legal guardian, placed in CA-60 and recorded in Student Data System (e.g., PowerSchool).

OR

Superintendent or designee **does not approve the plan.** Copy of plan is provided to parent/legal guardian and placed in CA-60.

[Michigan Department of Education Personal Curriculum Resources](#)
[Northwest Education Services Personal Curriculum Resources](#)

This document is intended to provide general guidance. Due to the complexity of the law, policies and guidance will continue to evolve. For specific information regarding the law, please refer to [MCL 380.1278a](#) and [MCL 380.1278b](#)